

# Ultra Clean™ 6-7220

## AUTOMATIC INDUSTRIAL DOOR SYSTEM

Series 2001 HD-Slide™ Operator

Type 200 Stainless Steel Doors  
Type 20 Header/Track

Optional Configurations:  
Type 1000 Pneumatic Operator  
Type 400 Fiberglass Doors



### Automatic Doors are Essential Clean Room Components

The Horton sterile system's door panel is designed specifically for use in pharmaceutical and food manufacturing clean rooms. The electric operator, replaceable track and wheels that carry the doors are concealed in a sturdy aluminum header.

### Operator

The type 7000, series 2001 HD-Slide™, belt drive operator has a maximum weight capacity of 500 lbs. (227 kg) per door panel. The heavy duty electric motor is coupled with a worm gear reducer. Biparting units can have an opening speed of 5 ft. (1524 mm) per second\* and reverse on contact. An optional pneumatic door operator is available to meet NEMA class 1 division 1 requirements.

\*Safety codes and standards limit maximum speeds and are determined by overall door panel weight.

### Door Panel Construction

Door panels are constructed of non-corrosive 304 stainless steel with a brushed #4 satin finish. The door has unique gaskets to reduce air infiltration. Optional flush glazed sanitary vision panels are available. The Horton model 6-7420 has optional Fiberglass Reinforced Plastic (FRP) door panels with either an end grain balsa wood, urethane or polystyrene foam core.

### Header/Track

The operator is fully enclosed within the Horton Type 20 header/tracK system. This easy-to-install, surface applied or opening mounted system, is constructed of a heavy weight aluminum alloy header case and replaceable track. Doors are suspended on replaceable 1 3/4" diameter ball bearing wheels with nylon tires for quiet operation. The header/tracK system and door jambs are available in either a 204R1 clear anodized aluminum finish or with stainless steel cladding.

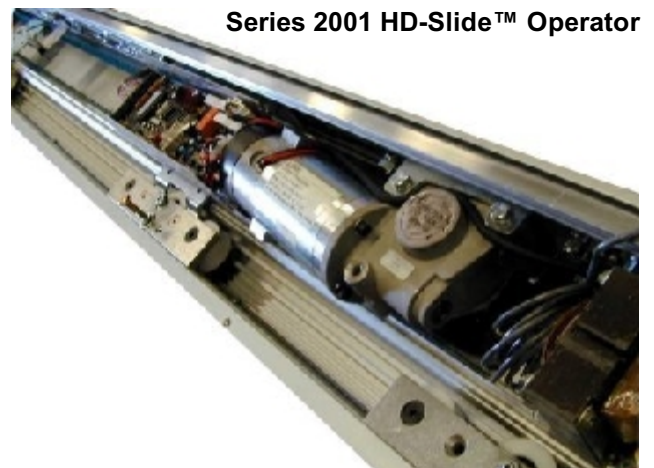
### Standard Features:

- Heavy weight aluminum alloy header/tracK
- Quiet Operation
- Microprocessor control
- Encoder based operator
- 3/4" (19 mm) wide steel reinforced drive belt
- 18 ga. flush stainless steel door panels
- Flush cup door pulls on non-breakout units

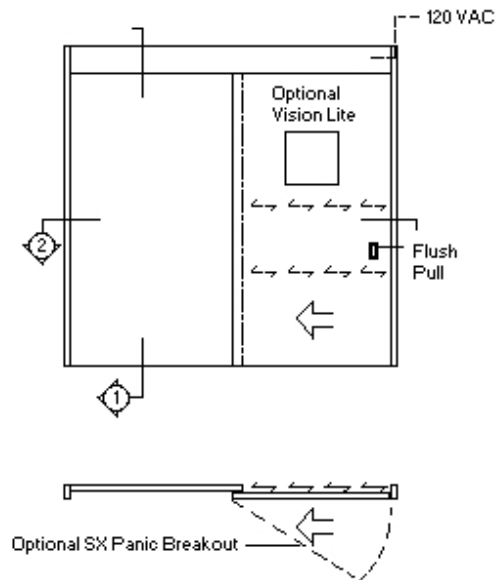
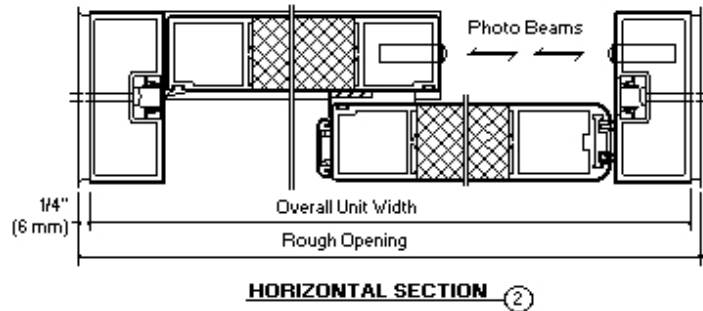
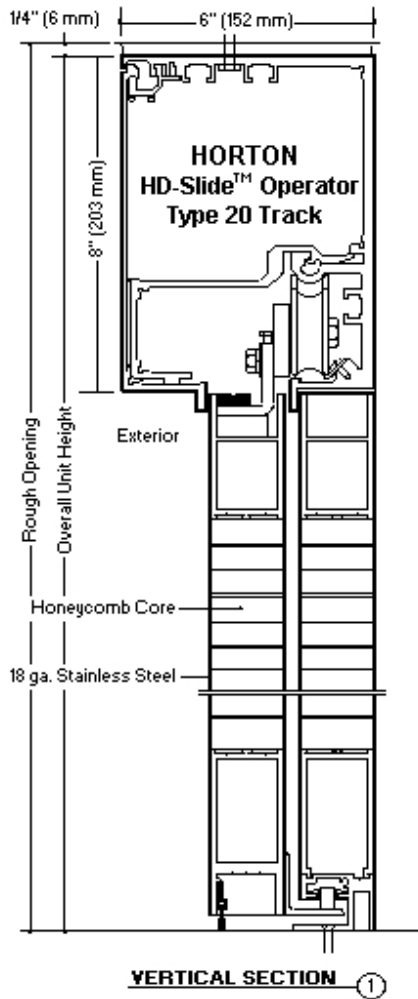
### Specifier Options:

- Stainless steel clad header/tracK and jambs
- Fiberglass Reinforced Plastic doors
- Flush glazed sanitary vision lights
- Emergency door panel breakout (swing-out)
- Electric interlocking
- Electric security locking
- Overall unit dimensions
- Wide choice of actuation switches
- Pneumatic door operator / NEMA Class One

Industrial Sliding Door Coding		6 - 0 0 0 0			
<b>Operator</b>					
1 Pneumatic	4 Pneumatic Cable Cylinder				
2 Electric Linear-Drive	7 Electric Belt-Drive				
3 Electric Flex-Drive	9 Manual				
<b>Door Panel</b>					
1 Steel	6 Cooler/Freezer Door				
2 Stainless Steel	7 Sectional Insulated Alum.				
4 Fiberglass Reinforced Polyester (FRP)	8 Fire Rated Steel				
5 Aluminum Stile and Rail Construction	9 Door by Others				
<b>Header/Track System</b>					
1 Aluminum	5 Steel Box Track *	* Limited availability. Call for details.			
2 Heavy Wt. Aluminum	6 Steel Refrigeration Track				
4 Steel Mono-rail	7 Steel Case with Mono-rail Track *				
	9 Header/Track System by Other				
<b>Door Types/Functions - Reserved by the Manufacturer</b>					
0 - OX	1 - XO	2 - PX	3 - XP	4 - OXXO	5 - PXXP



Series 2001 HD-Slide™ Operator



*Distributed in New Jersey by:*

**Eastern Door Service, Inc.**

Florence Industrial Center  
70 Cathy Lane, Unit One  
Burlington, NJ 08016-9720

609.499.8200 voice  
800.390.5521 toll free  
609.499.8245 fax

**visit us on the web at:** [www.EDSdoors.com](http://www.EDSdoors.com)  
**email:** [sales@EDSdoors.com](mailto:sales@EDSdoors.com)



Horton Automatics  
4242 Baldwin Blvd.  
Corpus Christi, TX 78405-3399

512.888.5591 voice  
800.531.3111 toll free  
512.888.6510 fax

[www.HortonDoors.com](http://www.HortonDoors.com)

Horton Automatics, Ltd.  
Unit A Hortonwood 31  
Telford, Shropshire  
England TF1-4GS

++44 01952 670169 voice  
++44 01952 670181 fax

The Genuine. The Original.



A Division of Overhead Door Corporation  
Wholly owned by Sanwa Shutter Corporation