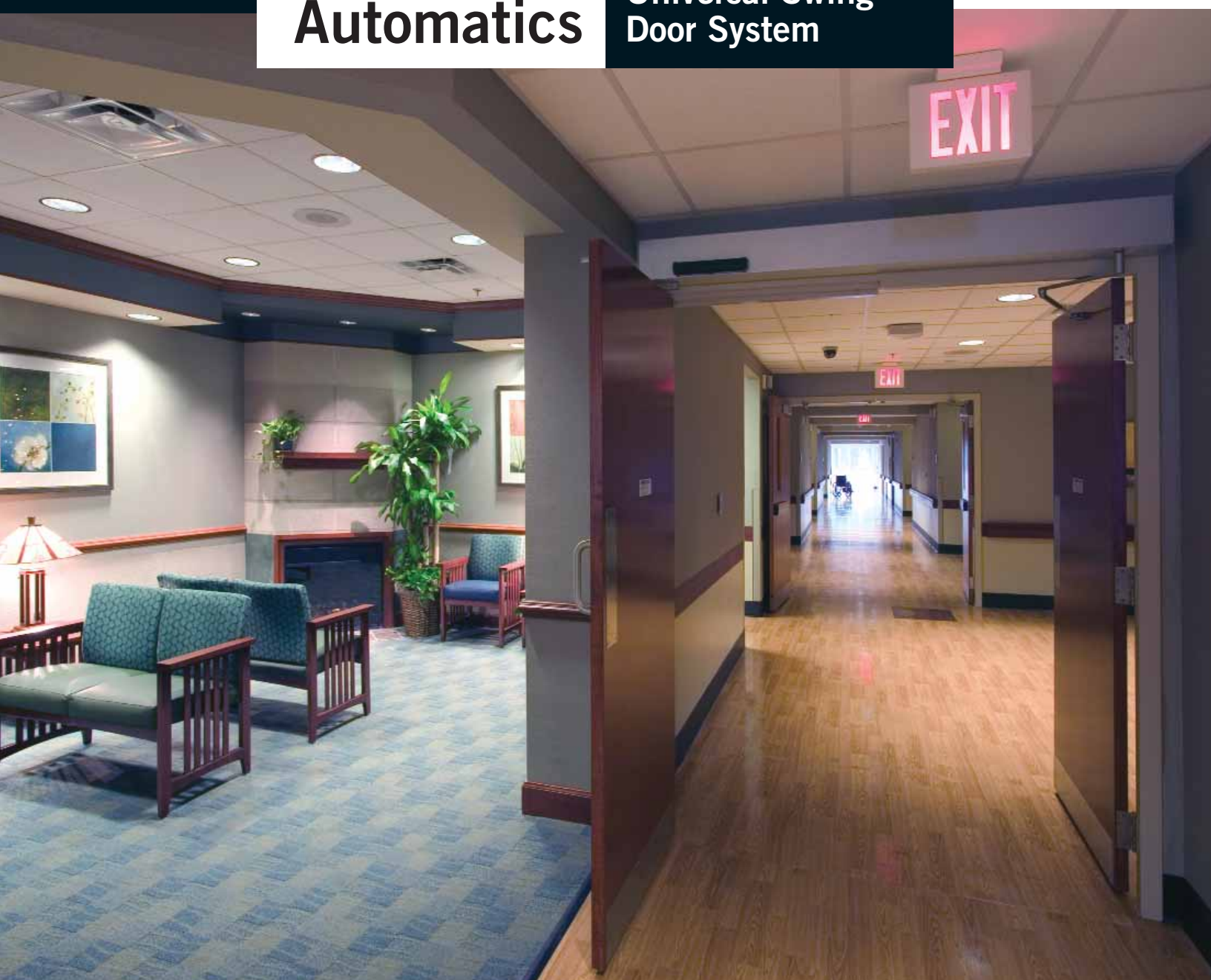


DORMA
Automatics

ED400
Universal Swing
Door System



The DORMA ED400 — Powerful, Reliable, Flexible, and Intelligent.

Powerful

DORMA's ED400 full power operator is designed for demanding applications such as retail centers, airports, and healthcare facilities. Engineered for high traffic entrances and heavy duty applications, the ED400 can handle doors up to 320 lb per door leaf.

Reliable

DORMA Automatics products are tested for one million cycles in climate controlled test chambers that replicate severe weather conditions. A built-in power boost helps keep the door closed even

when it is exposed to high wind or stack pressure buildup.

Featuring a state of the art microprocessor control, the ED400 has a fully enclosed motor gear box, while the concealed spring package provides powerless self closing. Virtually maintenance free, this unit provides smooth, silent door operation.

Flexible

This unit functions as either a low energy operator or a full energy unit and can be modified with the flip of a switch. These complete factory engineered door systems meet all of the

stringent requirements of ANSI 156.10 and ANSI 156.19 as well as UL325.

The ED400 operator is ideal for applications that require an ADA compliant entrance. With a multitude of adjustable features, you have the flexibility to fine-tune the door to meet your specific needs—all without the need for special tools or hand held programming terminals.

In the event of power loss, the controller has fuse and electronic power surge protection. This function allows the closing system to act like a door closer, providing easy manual operation.

Intelligent

This operator is built with the most technologically advanced encoder and microprocessor control, utilizing the most innovative user interface on the market today. The microprocessor is self learning for the door weight and inertia, providing the smoothest operation. The controller has dedicated circuits and LED status indicators for up to 5 safety sensors, which means no more doubled up circuits or decreased performance. The easy 3 digit display allows you to monitor the performance of every function for easy diagnostic evaluation.



Integrated Features

- Optional power boost mode is built-in to help keep your door closed when your application has a windy exposure or stack pressure build-up.
- Microprocessor control encoder motor has built-in diagnostics.
- Push-n-go feature is selectable at your choice.
- Power assist opening self-engages whenever the door is pushed manually.
- Built-in lock delay eliminates the need for another expensive interface module.
- The safety touch feature initiates door reopening whenever an obstruction occurs during the closing cycle.
- A hard stop prevents wall damage, with an additional electronic stop that allows the door to be set at any desired angle.
- Indefinite hold open function allows for faster traffic control and fresh air.



Highly Adjustable

A multitude of adjustable features give you the flexibility to customize the application to your specific needs.

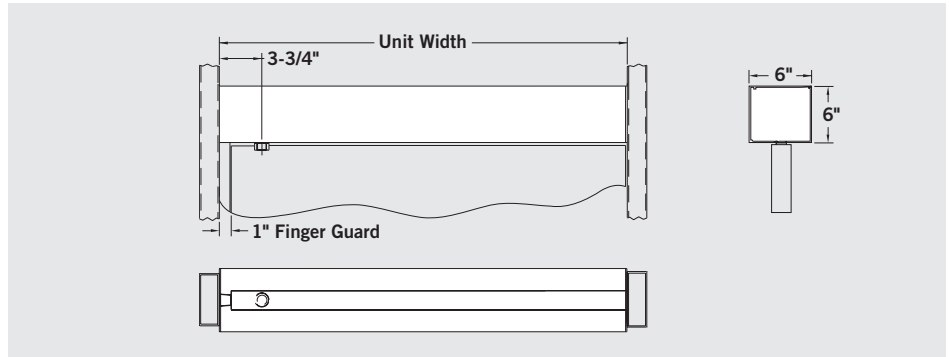
- Full energy mode for high volume traffic areas such as retail stores, airports, and hospitals.
- Heavy-duty low energy mode for doors with higher traffic patterns requires ADA compliance without the need to change the springs.
- Inswing or outswing models are available in surface mount or overhead concealed.
- Single, double, or double egress door applications are all available.
- A built-in circuit allows for fire alarm integration and control.
- ED400 operator can handle doors up to 320 lb per door leaf.
- Handed door is field-adjustable as needed.

Aesthetic solutions for swinging door applications.

ED400 Configurations

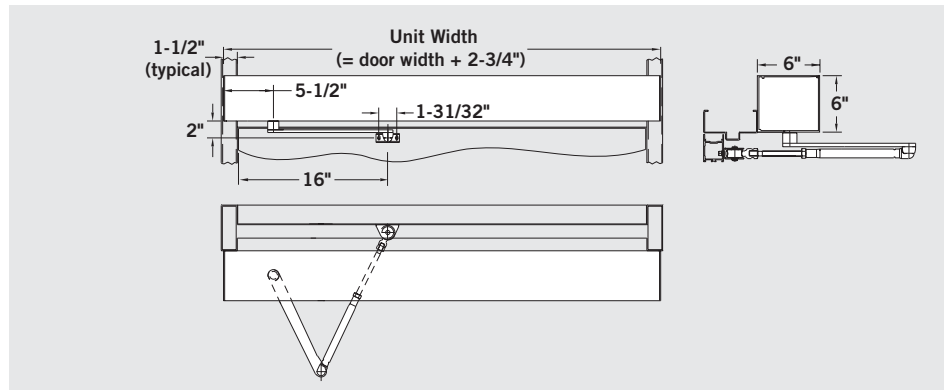
Overhead Concealed Mounting

Conceals the operator in the door frame with the output shaft of the operator acting as the upper door pivot and bearing.



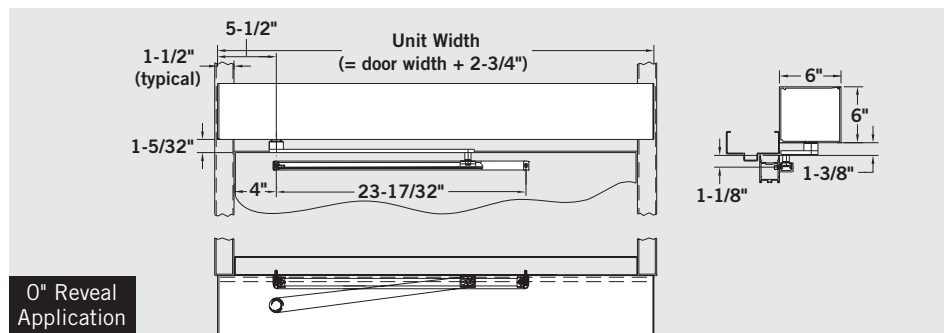
Surface Mount Outswing

The operator is surface applied to the door frame with a push arm assembly attached to the top door rail.

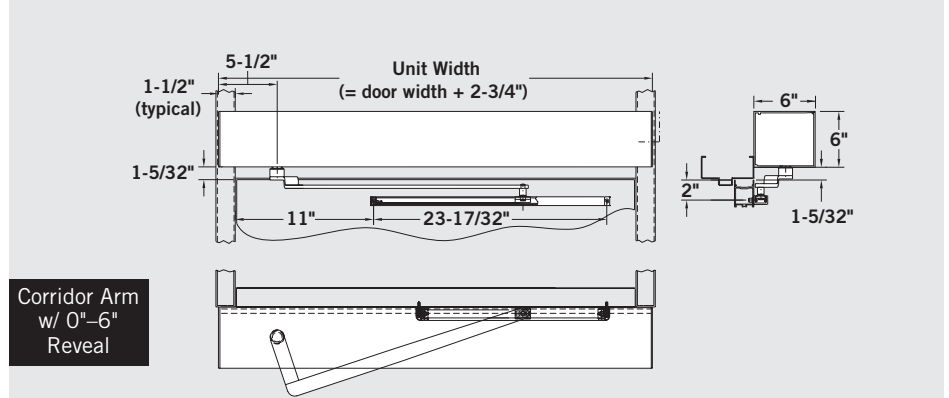


Surface Mount Inswing

The operator is surface applied to the door frame with slide track assembly mounted to the top door rail.

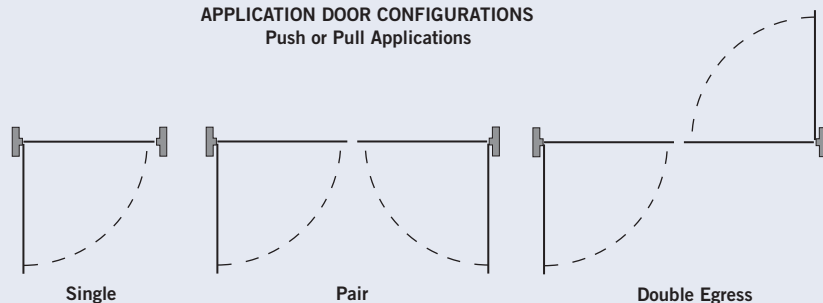


0" Reveal Application



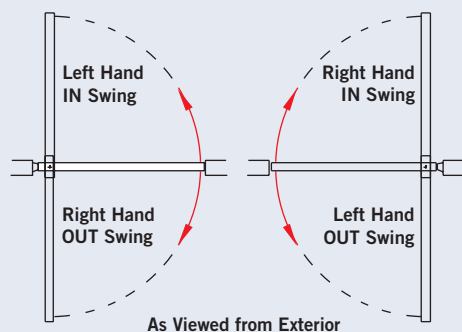
Corridor Arm w/ 0"-6" Reveal

APPLICATION DOOR CONFIGURATIONS
Push or Pull Applications



DOOR TYPES- Hollow Metal, Wood, Glass, and Aluminum.

NOTE: Drawings are for informational purposes and are not to scale.



DOOR HANDING DEFINITION



A History of Innovative Design

Since 1908, DORMA has been building a reputation for producing some of the most technologically advanced automatic door systems in the world.

DORMA Automatics, based in Chicago, Illinois, designs and manufactures a complete range of automatic door systems that meet or exceed industry standards while maintaining architectural appeal. DORMA is recognized worldwide for producing attractive products with superior functionality and design versatility.

The innovative line includes sliding, swinging and revolving door systems covering a wide range of applications and finishes.

DORMA Automatics, along with Crane Revolving Doors, DORMA Architectural Hardware, DORMA Glas, Modernfold, DORMA Mexico and DORMA Canada comprise DORMA Group North America, part of the DORMA Group, the world's largest manufacturer of door control systems. Founded nearly 100 years ago the company has always been a driving force behind developments in door system technology.



DORMA Group North America

Leaders in Architectural Opening Solutions



UL325 patent pending

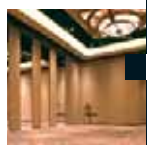
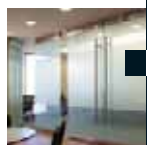
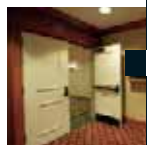
DORMA Automatics
924 Sherwood Drive
Lake Bluff, IL 60044

Toll Free: 877.367.6211
Fax: 877.423.7999

Email: automatics@dorma-usa.com
www.dorma-usa.com

©2006 DORMA Group North America
DORMA is a registered trademark of DORMA Properties, Inc.
DORMA reserves the right to improve product and change its specifications without notice.

3.06BP 2M



DORMA Automatics

Complete Automated Door Solutions

Providing automatic doors that meet or exceed industry standards while maintaining architectural appeal.

Crane Revolving Doors

Pedestrian Flow, Safety & Aesthetics

The choice of leading architects for commercial and institutional buildings throughout the world.

DORMA Architectural Hardware

Providing Safety & Security Around the Door

Offering a complete line of door controls, locks, exit devices, and electronic access control hardware.

DORMA Glas

Elegance, Versatility & Beauty

Delivering modern style and reliable performance with accessories and systems for tempered glass entrances.

Modernfold

Management of Sound & Space Division

Designs, manufactures, and services operable partitions and accordion doors.